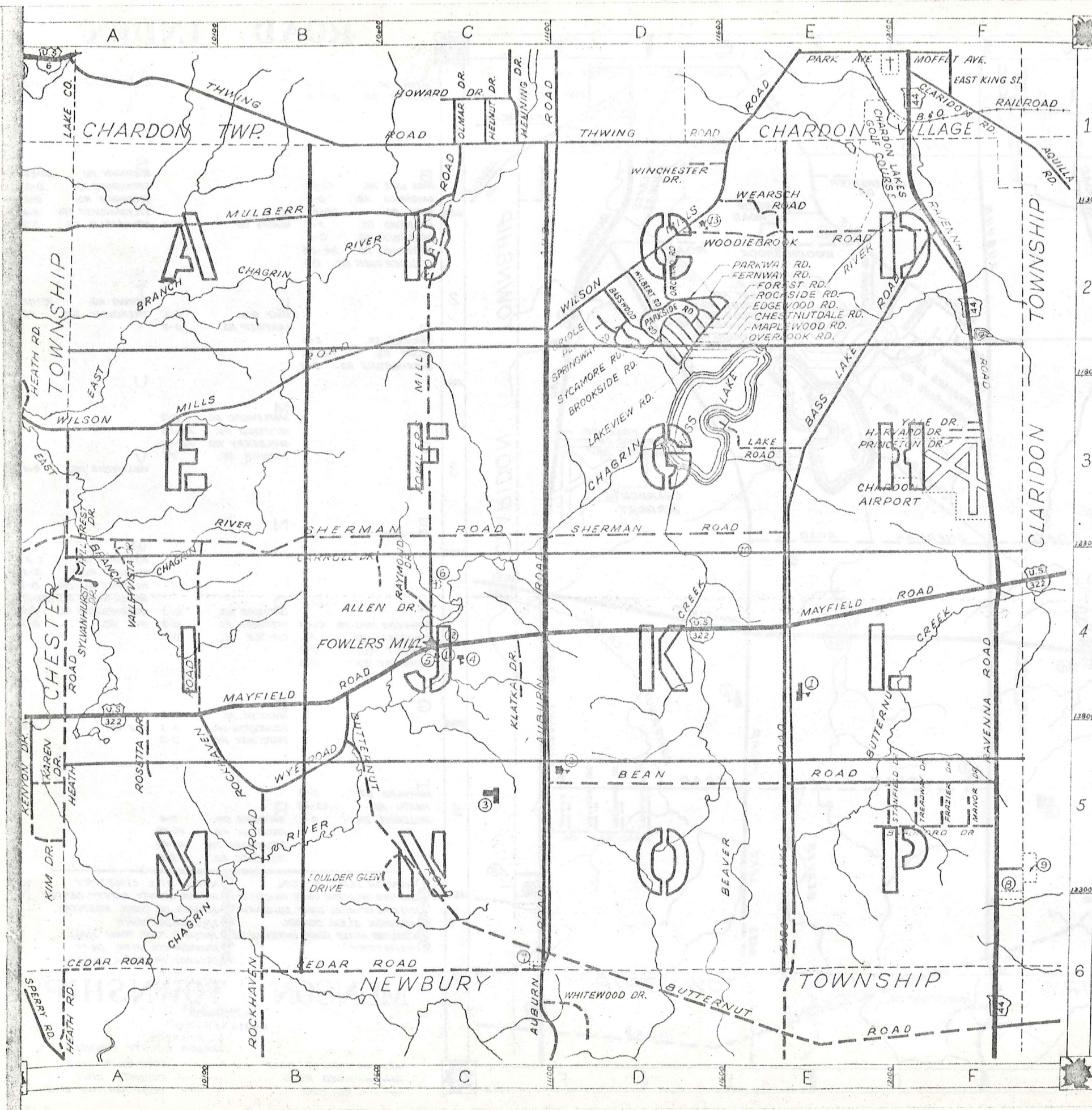


ROAD INDEX



A	ALLEN DR. C-4 AUBURN RD. D1-C6	I	R ^{cont.} ROSETTA DR.
B	BASS LAKE RD. F2-E6 BASSWOOD RD. D-2 BEAN RD. D5-F5 BRADFORD DR. F-5 BROOKSIDE RD. D-2 BUTTERNUT RD. B4-D6 BOULDER GLEN DR. C5	J	S SHERMAN RD. SPRINGWAY RD. SYCAMORE RD. SYLVANHURST DR. STANFIELD DR. C-4
C	CARROLL DR. C-4 CEDAR RD. A6-C6 CHESTNUTDALE RD. D-2	K	K KLATKA DR. C-4
D		L	L LAKE RD. E-3 LAKEVIEW RD. D-2
E		M	M MAPLEWOOD RD. D-2 MAYFIELD RD. A4-F4 MULBERRY RD. A2-C1 MANOR DR. F5
F		N	N VALLEYVISTA DR. V
G		O	O ORCHARD RD. D-2 OVERLOOK RD. D-2 WYE RD. D-2
H	HARVARD DR. F-3 HEATH RD. A3-A5 HILLCREST DR. A-4	P	P PARKSIDE RD. D-2 PRINCETON DR. F-3 PARKWAY RD. D-2
I		Q	Q RAYMOND DR. C-4 RAVENNA RD. F1-F6 ROCKHAVEN RD. A4-B6 ROCKSIDE RD. D-2
J		R	R RAYMOND DR. C-4 RAVENNA RD. F1-F6 ROCKHAVEN RD. A4-B6 ROCKSIDE RD. D-2

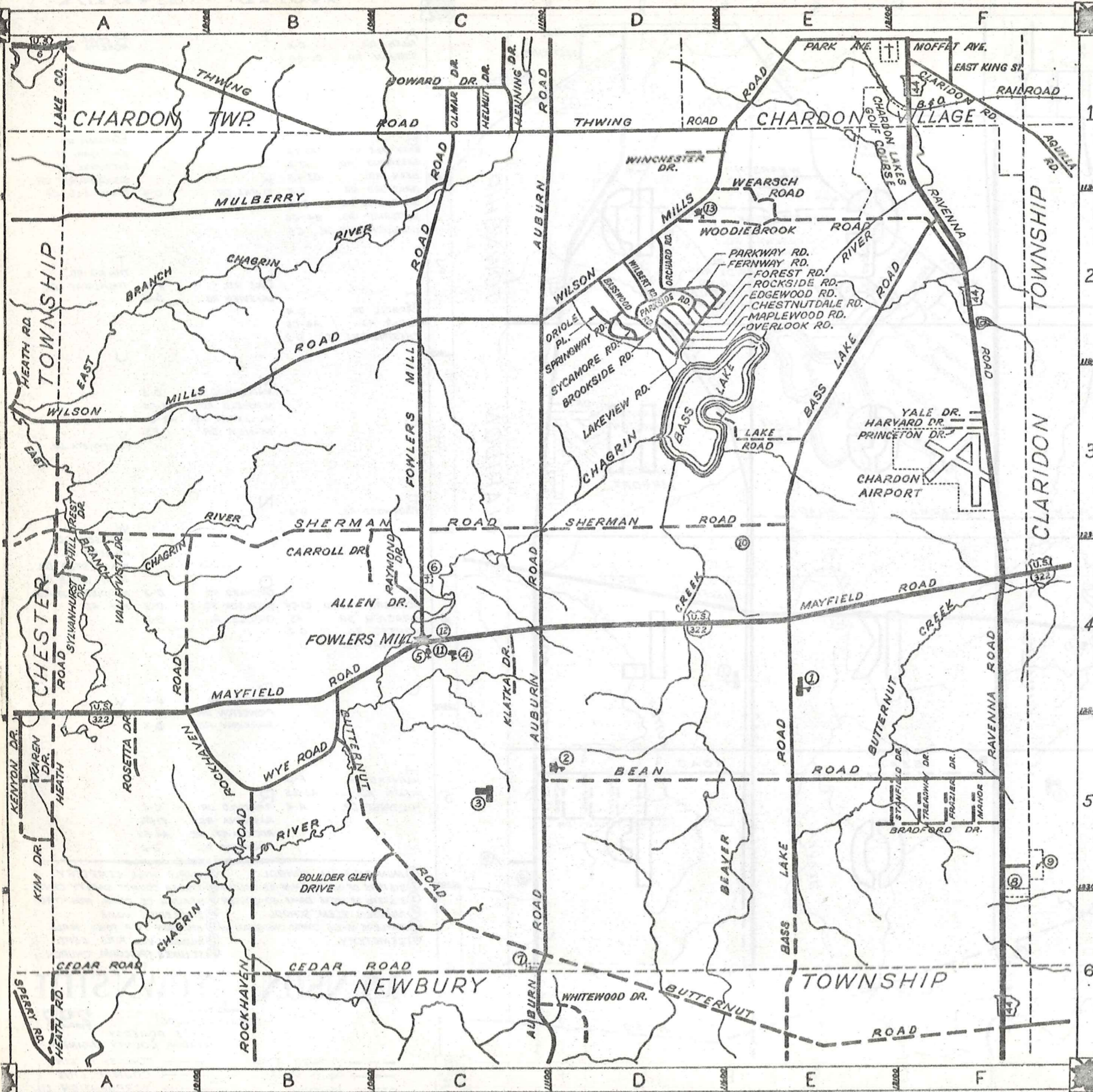
- ① MUNSON ELEM. SCHOOL
- ② SISTERS OF NOTRE DAME ED. CENTER
- ③ SISTERS OF NOTRE DAME ED. CENTER
- ④ MUNSON ELEM. SCHOOL
- ⑤ FOWLERS MILLS COMM. CHRISTIAN CH.
- ⑥ CEMETERY
- ⑦ MAPLE HILL CEMETERY
- ⑧ GEauga COUNTY SAFETY CENTER
- ⑨ GEauga CO. COMM. HOSPITAL
- ⑩ INGLESIDE HOME
- ⑪ MUNSON TWP. TOWN HALL
- ⑫ MUNSON VOL. FIRE DEPT.
- ⑬ ST. LUKE'S EPISCOPAL CHURCH

MUNSON TOWNSHIP 297

SCALE: 1" = 2000'
CLYDE POMEROY
GEAUGA COUNTY ENGINEER

- UNPAVED ROAD
- PAVED ROAD
- ++++ RAILROAD
- TOWNSHIP LINE
- COUNTY LINE
- CORPORATION LINE

ROAD INDEX



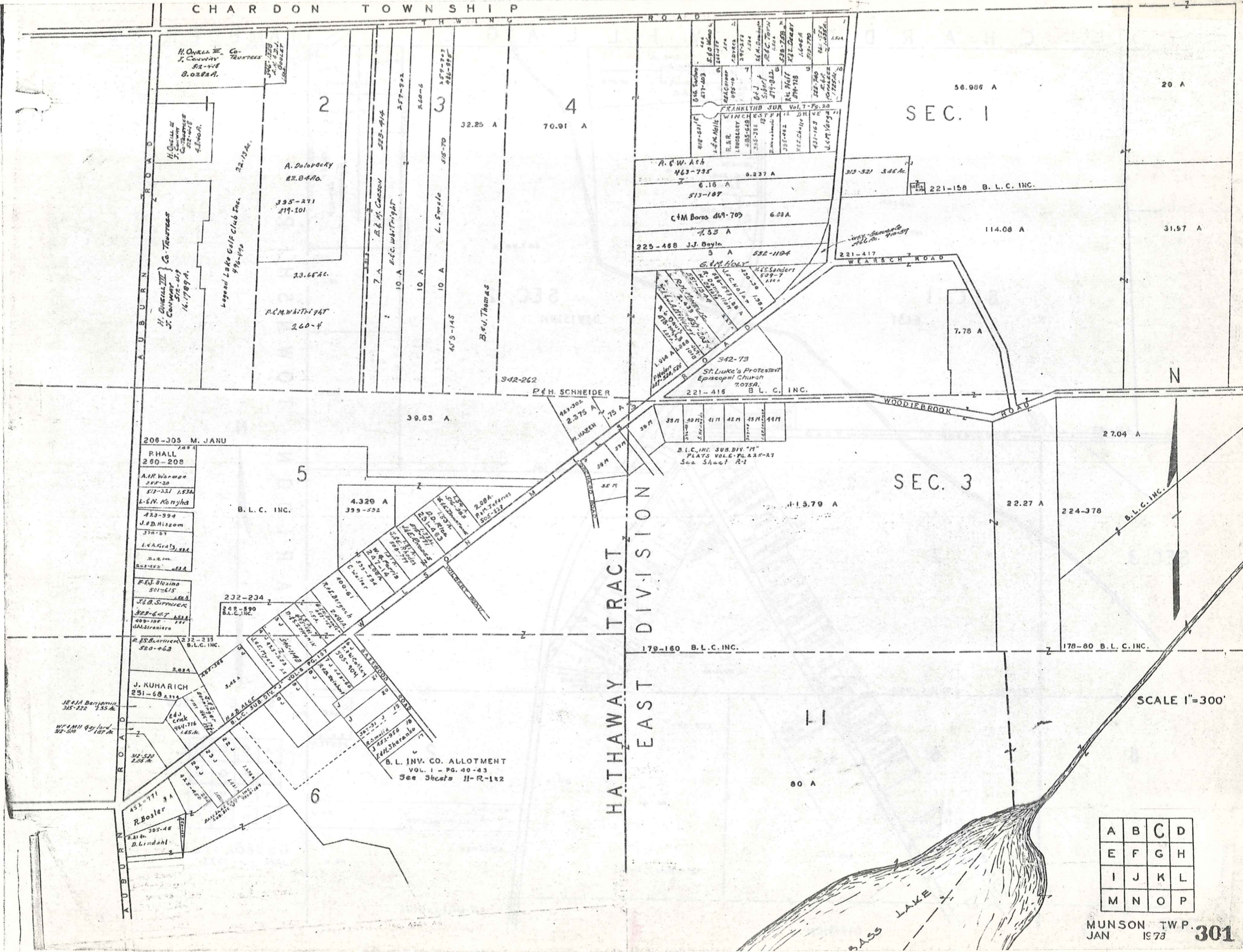
A	ALLEN DR. C-4 AUBURN RD. DI-C6	I	R cont. ROSETTA DR. A-5
B	BASS LAKE RD. F2-F6 BASSWOOD RD. D-2 BEAN RD. D5-F5 BRADFORD DR. F-5 BROOKSIDE RD. D-2 BUTTERNUT RD. B4-D6 BOULDER GLEN DR. C5	J	S SHERMAN RD. A5-E9 SPRINGWAY RD. D-2 SYCAMORE RD. D-2 SYLVANHURST DR. A-4 STANFIELD DR. E5
C	CARROLL DR. C-4 CEDAR RD. A6-C6 CHESTNUTDALE RD. D-2	K	KLATKA DR. C-4
D		L	L LAKE RD. E-3 LAKEVIEW RD. D-2
E	EDGEWOOD RD. D-2	M	M MAPLEWOOD RD. D-2 MAYFIELD RD. A4-F4 MULBERRY RD. A2-C1 MANOR DR. F5
F	F FOWLERS MILL RD. C1-C4 FRAZIER DR. F5 FOREST RD. D-2 FERNWAY RD. D-2	N	N VALLEYVISTA DR. A-4
G		O	O ORCHARD RD. D-2 OVERLOOK RD. D-2 ORIOLE PL. D-2
H	H HARVARD DR. F-3 HEATH RD. A3-A5 HILLCREST DR. A-4	P	P PARKSIDE RD. D-2 PRINCETON DR. F-3 PARKWAY RD. D-2
I		Q	Q YALE DR. F-3
J		R	R RAYMOND DR. C-4 RAVENNA RD. F1-F6 ROCKHAVEN RD. A4-B6 ROCKSIDE RD. D-2
K		S	S MAPLE HILL CEMETERY GEAUGA COUNTY SAFETY CENTER GEAUGA CO. COMM. HOSPITAL INGLESIDE HOME MUNSON TWP. TOWN HALL MUNSON VOL. FIRE DEPT. ST. LUKE'S EPISCOPAL CHURCH
L		T	T THWING RD. B1-D1 TREADWAY DR. F5
M		U	U
N		V	V
O		W	W WEARSCH RD. E-2 WILBERT RD. D-2 WINCHESTER DR. D-1 WILSON MILLS RD. A3-B1 WOODIEBROOK RD. D-2 WYE RD. B-5
P		X	X
Q		Y	Y
R		Z	Z

- ① MUNSON ELEM. SCHOOL
- ② SISTERS OF NOTRE DAME ED. CENTER
- ③ SISTERS OF NOTRE DAME ED. CENTER
- ④ MUNSON ELEM. SCHOOL
- ⑤ FOWLERS MILLS COMM. CHRISTIAN CH.
- ⑥ CEMETERY
- ⑦ MAPLE HILL CEMETERY
- ⑧ GEAUGA COUNTY SAFETY CENTER
- ⑨ GEAUGA CO. COMM. HOSPITAL
- ⑩ INGLESIDE HOME
- ⑪ MUNSON TWP. TOWN HALL
- ⑫ MUNSON VOL. FIRE DEPT.
- ⑬ ST. LUKE'S EPISCOPAL CHURCH

MUNSON TOWNSHIP

SCALE 1" = 2000'
O.J. ROBINSON
GEAUGA COUNTY ENGINEER

- UNPAVED ROAD
- PAVED ROAD
- ++++ RAILROAD
- TOWNSHIP LINE
- COUNTY LINE
- CORPORATION LINE



SEC. 1

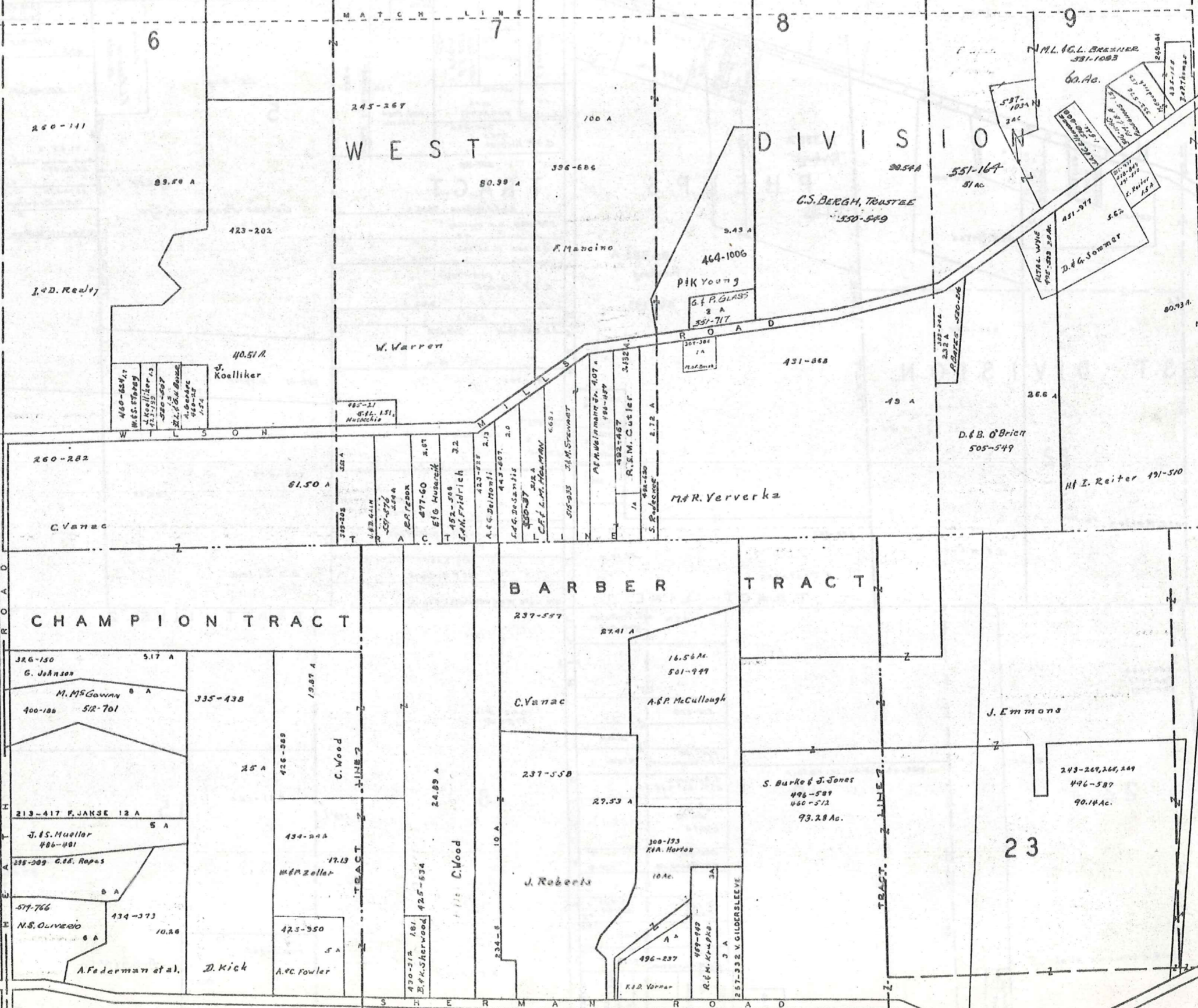
SEC. 3

HATHAWAY EAST TRACT DIVISION

A	B	C	D
E	F	G	H
I	J	K	L
M	N	O	P

T O W N S H I P

C H E S T E R



12



TRACT TWO

SCALE 1"=300'

A	B	C	D
E	F	G	H
I	J	K	L
M	N	O	P

MUNSON TWP. D.
JAN. 1 1973

MATCH LINE

R O A D

WEST DIVISION

20.738 A
R. Wang
PHELPS

80.533 A
R. Wang

TRACT

5

TRACT 6

12

TRACT 7

N

H. J. Reiter 491-510

M. Van Cura

E. Poutasse

TRACT LINE 1

TRACT LINE 2

206-209
315-406
501-723

22

78.44

246-291 MBP. WALSH 40.75 A

19

4.5 A
E. Poutasse
509-535

516-620

3.15 A

518-120

J. M. LAMPSON 3.15 A

S. Apthorp 479-106 3.15

S. Apthorp 464-745 6.327 A

346-457

M. M. HANNA, JR 3.20 A

H. B. J. Pierra 3.18 A

486-461 3.18 A

300-80 3.18 A

E. H. KOLASZANSKI 3.18 A

515-110

517

512-110

511-377

510-110

242-514
515-51

18

221-160

15

SCALE 1"=300'

A	B	C	D
E	F	G	H
I	J	K	L
M	N	O	P

MUNSON TWP.
JAN. 1 1927

23

304

SHERMAN

R O A D

ROADWAY

See Ar.
F.L. Parsons
557-453

87654 A

GENUGA PROPERTIES, LTD.

367-45 L. Tyler 37 A

260-339

B. L. C., Inc.

495-929

B. L. C., Inc.

C. Russell

2.10 A

201-419
145 A
L. Munkel
480-752
6 1/2 A
175 A
Opatroy

423-678
J. Rand

3 A

463-586 12.5 A

M. D. SAMANTINI

377-215

J. P. BITUNTI

270-366 M. V. HERNANDEZ 5.08 A

451-766

1.07 A

E. B. WIDEM

319-260

10 A

508-752

R. & K. SWENCKI

8.03 A

259-366 H. Schiba 2 A

337-359

J. K. Hamlin

10.03 A

AG. A. W. B. A. I. A.

557-58

G. P. Richter

3.76 A

308-370

M. C. ARNDT

299-17

J. H. SHILL

3.6

557-1102

G. C. & S. L. BUREY

3.04

J. M. Crowl

501-111

4.7

378-5

E. R. WINKOS

466 A

522-961
R. J. Parsons, Jr.
189 A

557-932

433 A

557-949

11.48 A

459-491

7 25 A

427-279

O. A. BRADLEY 25 A

228-417 W. NOCK 3 A

126.75

260-339

B. L. C., Inc.

242-514
515-51

118 A

221-160

67.66 A

495-929

12.23

B. L. C., Inc.

2.10 A

EAST DIVISION

BASS LAKE

BASS LAKE RESERVE CO. ALLOTMENT
VOL. I - PG. 64-5-8-7
SEE SHEET 11-T
B.L. Reserve Sub. 2, Re Sub. of Sub. 1, Vol. I B. L. C. Inc.
263-251

1.547 A 255-431 T.D.M. WOODS 1.545 A 440-164	431-366 W. H. Kerschick 410-55 P. Duffin 542-25 R. L. BROWN	1.541 A ASS. LOT 7 1.541 A 501-705 501-631 1.54Ac.	452-913 M.E. Kennedy 1. Pass 1004 453-550	315-676 R. ZAMBORY 444-377 A. K. Ashby	270-22519L 1.30 A R. W. ROBERTSON 532-227 1.50 A Y. GAVENCOE 505-782 1.50 A R. H. McEWEN 505-145 1.2L	425-157 11L W.C. Marcum 277-229 10L 1.50 A R. RAJUSE	315-1530 1.50 A 316-915 2.02 A 1.67Ac
--	--	---	---	---	---	--	---

L. SCHIEMANN

E 12-66

B. L. C. INC.

F. BAZMIK
221-265 .005 A
TRACT 1
HATHAWAY TRACT
EAST DIVISION

B. L. C. INC.

221-50

B. L. C. INC.

156.17 A

7

8

10

221-416

TRACT 1

B. L. C. INC.

TRACT 2

B. L. C. CO.

3.52A

4.5 A
509-536

98.64 A

45.23 A

15

177-561

B. L. C. INC.

1 A 177-62

B. L. C. INC.

11.89 A

14

40.89 A

11

92.85 A

10

69.47 A

17.51 A

451-377
3.35 A

341-587
B.L.C. INC.

234-85

177-509

B. L. C. INC.

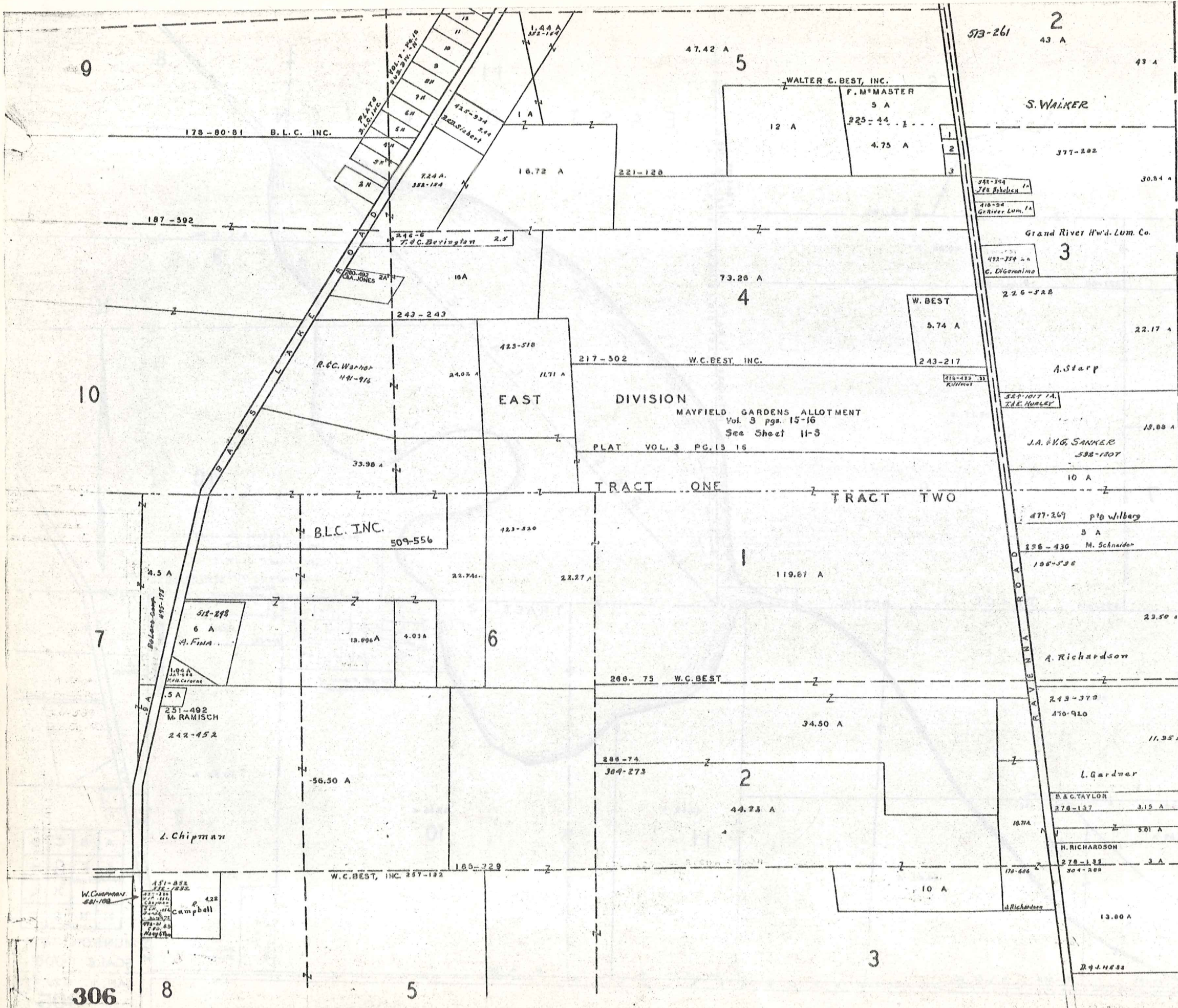
194-115 B.L.C. INC.

B. L. C. INC.

A	B	C	D
E	F	G	H
I	J	K	L
M	N	O	P

MUNSON TWP.
SCALE 1"=300'

JAN. 1 1979



1 B.M. MASTER 492-644
 2 240-117 453-500-334
 3 A.A. COOPERMAN 453-15

CLARKSON TOWNSHIP



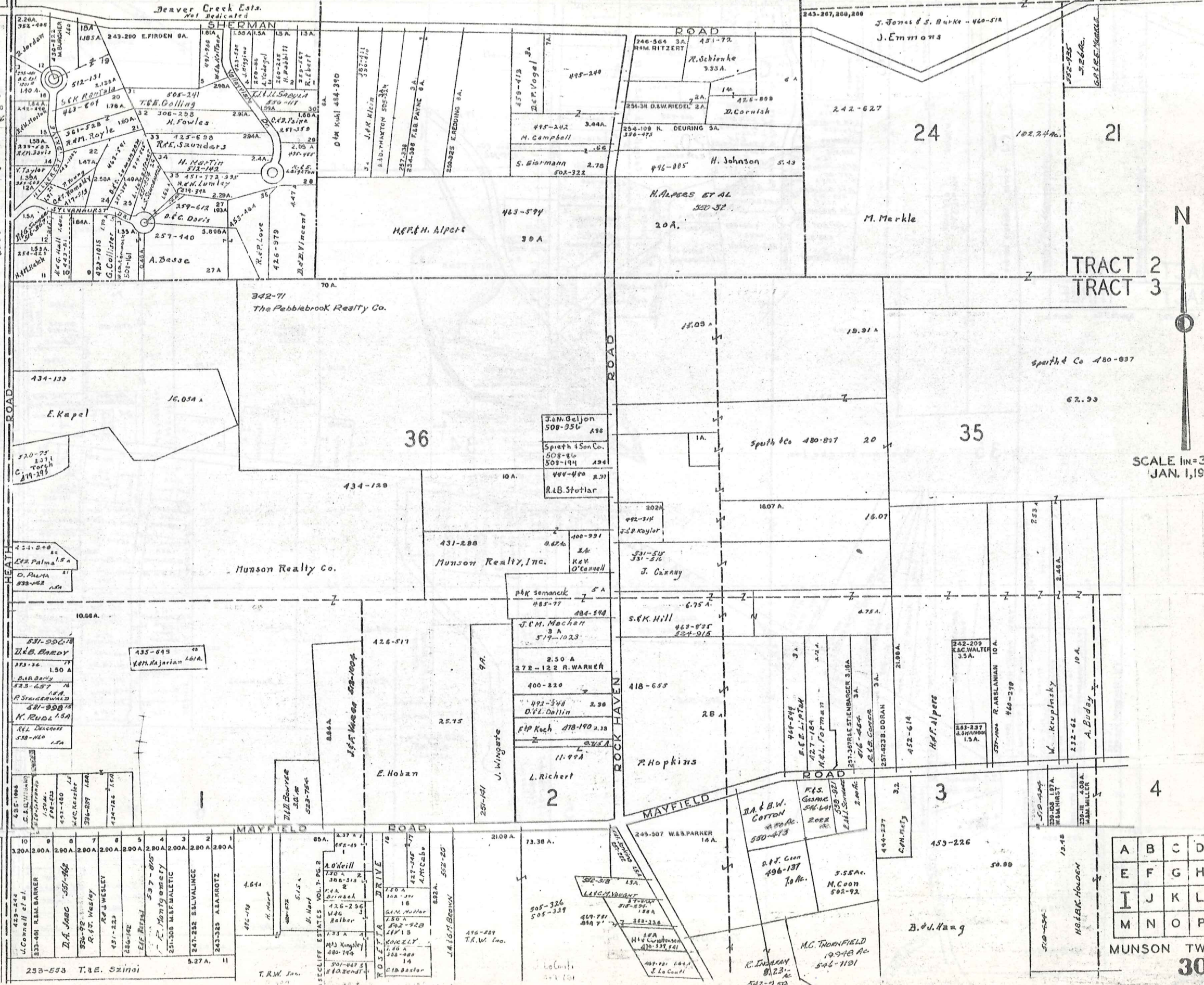
SCALE 1"=300'

A	B	C	D
E	F	G	H
I	J	K	L
M	N	O	P

MUNSON TWP.
 JAN 1973

306

CHAMPION TRACT BARBER TRACT



- 7 D. TEMPLE 243-42
- 8 V. BOUSE 409-558
- 9 J. W. MARRIS 373-50
- 10 J. A. SULLIVAN 312-700
- 11 H. M. HATCH 254-423
- 12 D. ...
- 13A V. TAYLOR 352-593
- 14 R. M. DAVIS 239-582
- 15 R. W. MORTON 242-240
- 16 ...
- 17 ...
- 18 ...
- 19 ...
- 20 L. NELSON 231-501
- 21 R. M. ROYCE 401-510
- 22 ...
- 23 ...
- 24 ...
- 25 ...
- 26 ...
- 27 ...
- 28 ...
- 29 ...
- 30 ...
- 31 ...
- 32 ...
- 33 ...
- 34 ...
- 35 ...
- 36 ...
- 37 ...
- 38 ...
- 39 ...
- 40 ...

CHESTER TOWNSHIP

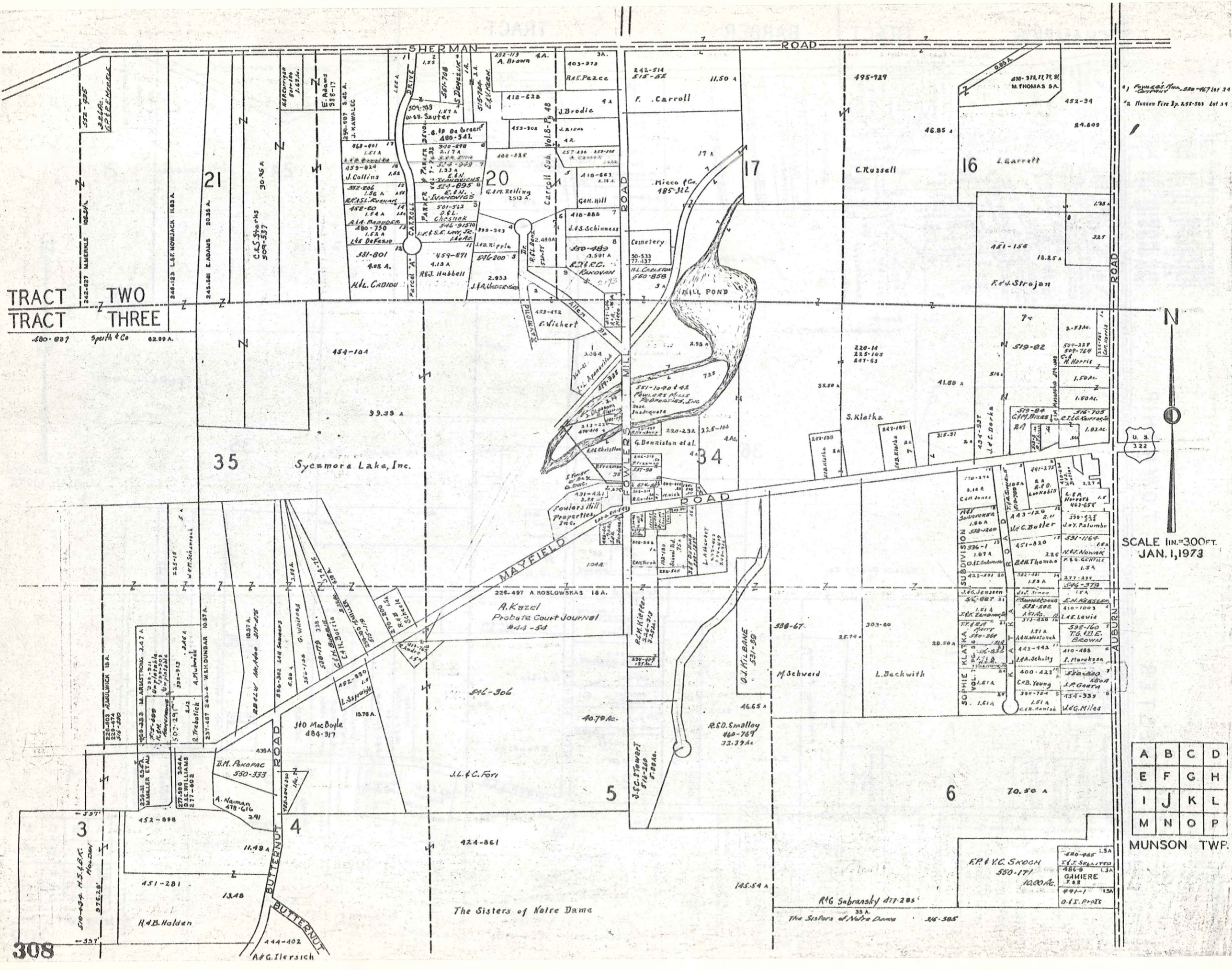


VOL. 4 - PG. 33 - 34 VALLEY VIEW ACRES

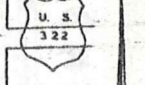
N
SCALE 1" = 300 FT
JAN. 1, 1973

A	B	C	D
E	F	G	H
I	J	K	L
M	N	O	P

MUNSON TWP. 307



1) Poulson's Plan 280-467 lot 34
 2) Hudson Fire Sp. 251-503 lot 34

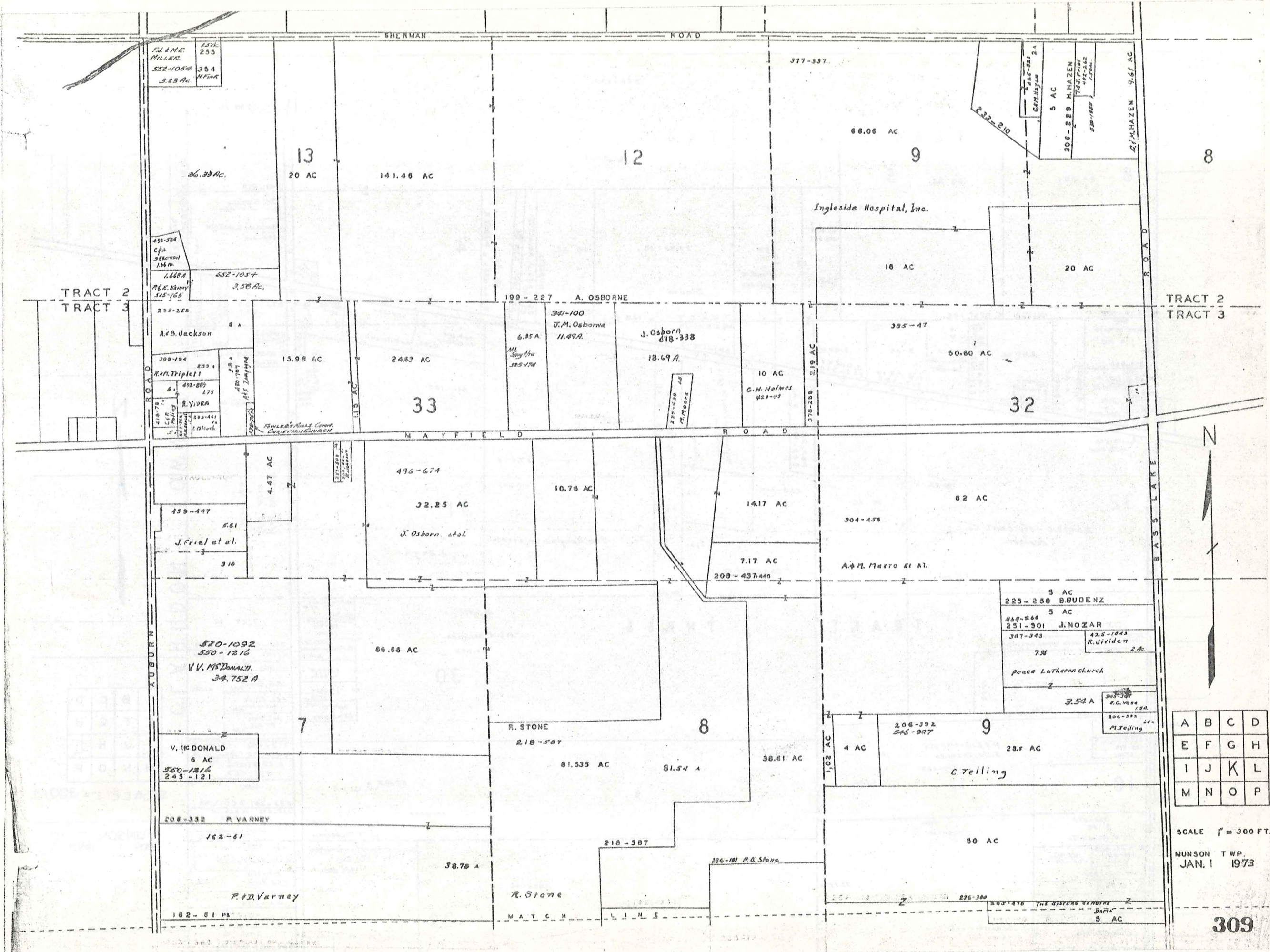


SCALE 1 IN. = 300 FT.
 JAN. 1, 1973

A	B	C	D
E	F	G	H
I	J	K	L
M	N	O	P

MUNSON TWP.

308



A	B	C	D
E	F	G	H
I	J	K	L
M	N	O	P

SCALE 1" = 300 FT.
 MUNSON TWP.
 JAN. 1 1973

260-326

TRACT

TWO

3

8 44 AC.

5 36 AC

W. Best

13.90 AC

143.83 A

243-215

J.S. BARKOCK 515-880

W. & E. JACKSON 2978-312

W. Best 418-887

8.95A

22.87 AC

10 AC

4

J. GOREAU 332-482

Bloom

M. RUSSELL

239-523 J. KAVALECZ

231 AC

230-199 1.58 AC

5 AC

J. PUZDER

224-433

233-429 577

509-551 509-554

C. BARKOCK et al 79.6A 152-514 200-181

257-132

THE STATE OF OHIO 4 AC

WALTER C. BEST INC.

TRACT LINE 7

226-176

339-504

345-208 H. FABRY 219A

A. & H. HERSICH

378-588

LEIP HENKLEY 3/20 524-545

6.95 AC

4 AC

5 AC

3.87 AC

5 AC

223-175 3 AC

3 AC

3 AC

3 AC

3 AC

3 AC

3 AC

3 AC

3 AC

3 AC

3 AC

3 AC

378-588

LEIP HENKLEY 3/20 524-545

C. HOFFMAN

501-903 251-439 243-614

M. JOHNSON

C. BATH 2.09 AC 251-535 410-476

G.S. HAJI 537-687

F. WISE et al 217-386

J. MAZHY 222-310

M&J. KAZUK

214-103

345-208 H. FABRY 219A

A. & H. HERSICH

F. FARLEY 223-478 239-307 509-912

214-103

61.52 A

34.82 AC

W. B. BARKOCK 510 Hess 507-500

346-572

Malco Corp

32

78.42 A

38 AC

200-140

45A

4.5A

31A

303-238

431-567

57.5 A

The Douglas Oviatt 4 Son

31

d. Bejan

W. B. BARKOCK 510 Hess 507-500

32

78.42 A

38 AC

200-140

45A

4.5A

31A

303-238

431-567

57.5 A

The Douglas Oviatt 4 Son

31

d. Bejan

W. B. BARKOCK 510 Hess 507-500

32

78.42 A

38 AC

200-140

45A

4.5A

31A

303-238

431-567

57.5 A

The Douglas Oviatt 4 Son

31

d. Bejan

W. B. BARKOCK 510 Hess 507-500

32

78.42 A

38 AC

200-140

45A

4.5A

31A

303-238

431-567

57.5 A

The Douglas Oviatt 4 Son

31

d. Bejan

W. B. BARKOCK 510 Hess 507-500

32

78.42 A

38 AC

200-140

45A

4.5A

31A

303-238

431-567

57.5 A

The Douglas Oviatt 4 Son

31

d. Bejan

W. B. BARKOCK 510 Hess 507-500

32

78.42 A

38 AC

200-140

45A

4.5A

31A

303-238

431-567

57.5 A

The Douglas Oviatt 4 Son

31

d. Bejan

W. B. BARKOCK 510 Hess 507-500

32

78.42 A

38 AC

200-140

45A

4.5A

31A

303-238

431-567

57.5 A

The Douglas Oviatt 4 Son

31

d. Bejan

W. B. BARKOCK 510 Hess 507-500

32

78.42 A

38 AC

200-140

45A

4.5A

31A

303-238

431-567

57.5 A

The Douglas Oviatt 4 Son

31

d. Bejan

W. B. BARKOCK 510 Hess 507-500

32

78.42 A

38 AC

200-140

45A

4.5A

31A

303-238

431-567

57.5 A

The Douglas Oviatt 4 Son

31

d. Bejan

W. B. BARKOCK 510 Hess 507-500

32

78.42 A

38 AC

200-140

45A

4.5A

31A

303-238

431-567

57.5 A

The Douglas Oviatt 4 Son

31

d. Bejan

W. B. BARKOCK 510 Hess 507-500

32

78.42 A

38 AC

200-140

45A

4.5A

31A

303-238

431-567

57.5 A

The Douglas Oviatt 4 Son

31

d. Bejan

W. B. BARKOCK 510 Hess 507-500

32

78.42 A

38 AC

200-140

45A

4.5A

31A

303-238

431-567

57.5 A

The Douglas Oviatt 4 Son

31

d. Bejan

W. B. BARKOCK 510 Hess 507-500

32

78.42 A

38 AC

200-140

45A

4.5A

31A

303-238

431-567

57.5 A

The Douglas Oviatt 4 Son

31

d. Bejan

W. B. BARKOCK 510 Hess 507-500

32

78.42 A

38 AC

200-140

45A

4.5A

31A

303-238

431-567

57.5 A

The Douglas Oviatt 4 Son

31

d. Bejan

W. B. BARKOCK 510 Hess 507-500

32

78.42 A

38 AC

200-140

45A

4.5A

31A

303-238

431-567

57.5 A

The Douglas Oviatt 4 Son

31

d. Bejan

W. B. BARKOCK 510 Hess 507-500

32

78.42 A

38 AC

200-140

45A

4.5A

31A

303-238

431-567

57.5 A

The Douglas Oviatt 4 Son

31

d. Bejan

W. B. BARKOCK 510 Hess 507-500

32

78.42 A

38 AC

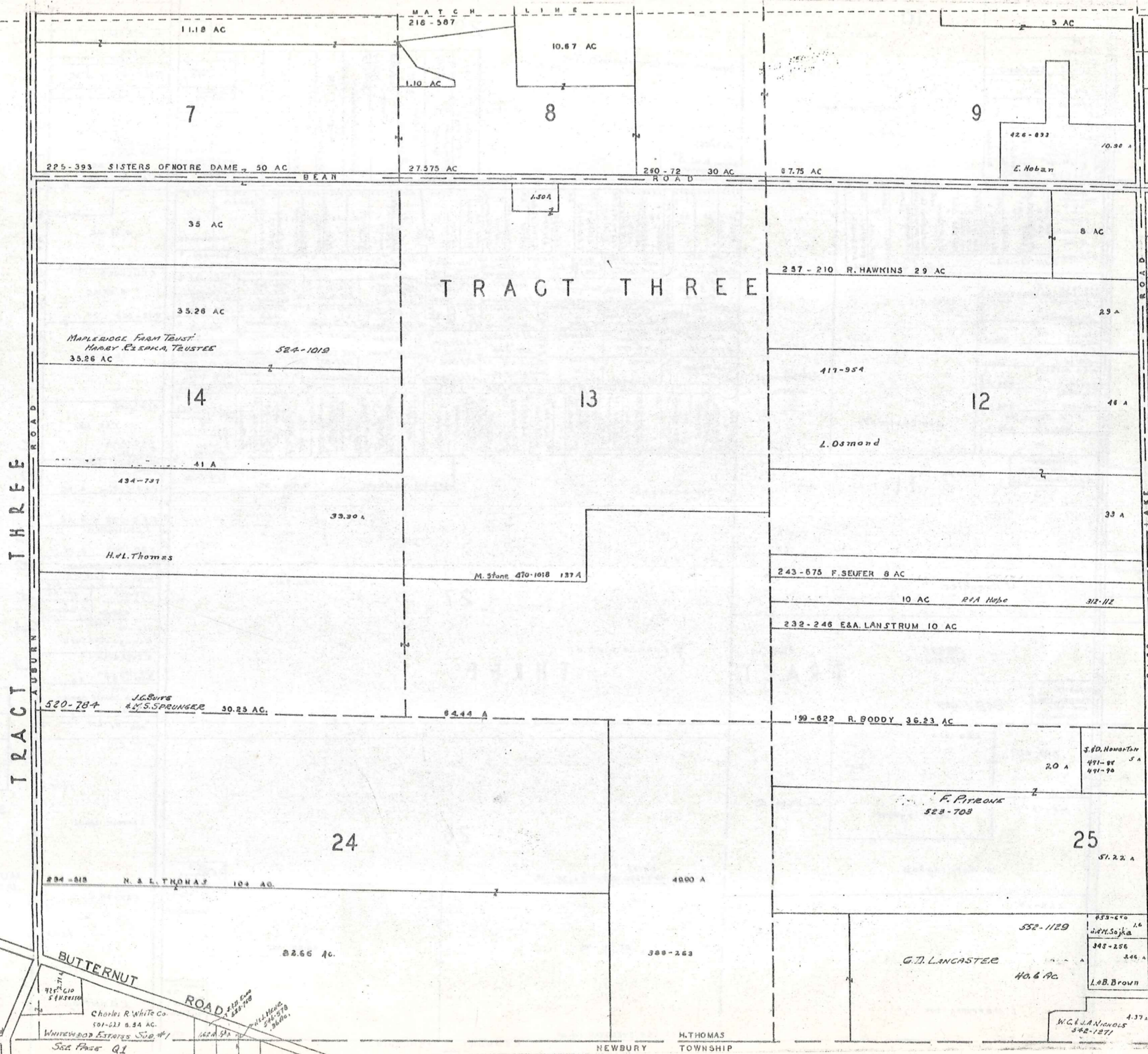
200-140

45A

4.5A

31A

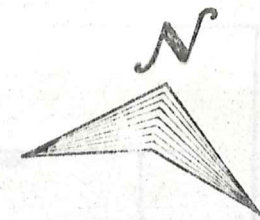
303-238



A	B	C	D
E	F	G	H
I	J	K	L
M	N	O	P

SCALE 1" = 300 FT
 MUNSON TWP.
 JAN. 1 1973

C.C. & M. M. DAVIS SUBDIVISION



Situated In The Township Of Munson, County Of Geauga And State Of Ohio And Known As Being A Part Of Original Munson Township, Lot 11, West Division Of Tract 1, Containing 13.337 Acres Of Land, And Being Same Part Of Land As Conveyed to C.C. & M.M. Davis, As described by Deed Recorded in Volume 531, Page 1268 OF Geauga County Deed Records.

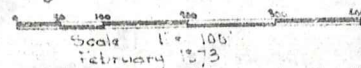
I hereby certify that I have surveyed the premises, and prepared the attached plat and that said plat is correct. Dimensions shown herein are expressed in feet and decimal parts thereof.

BRAIN, PRENSIL & ASSOCIATES

Engineers - Surveyors
Chagrin Falls, Ohio

Iron monuments indicated thus "I" will be set in place for final inspection and acceptance by County officials. All of which I certify to be correct.

Joseph Prensil
Joseph Prensil, Reg. # 5336



12.419 Acres subdivided into single family lots
0.244 Acres in newly dedicated road
0.674 Acres in Wilson Mills Road

13.337 Acres Subdivided Herewith

C.C. & M.M. Davis Vol. 531 Page 1268

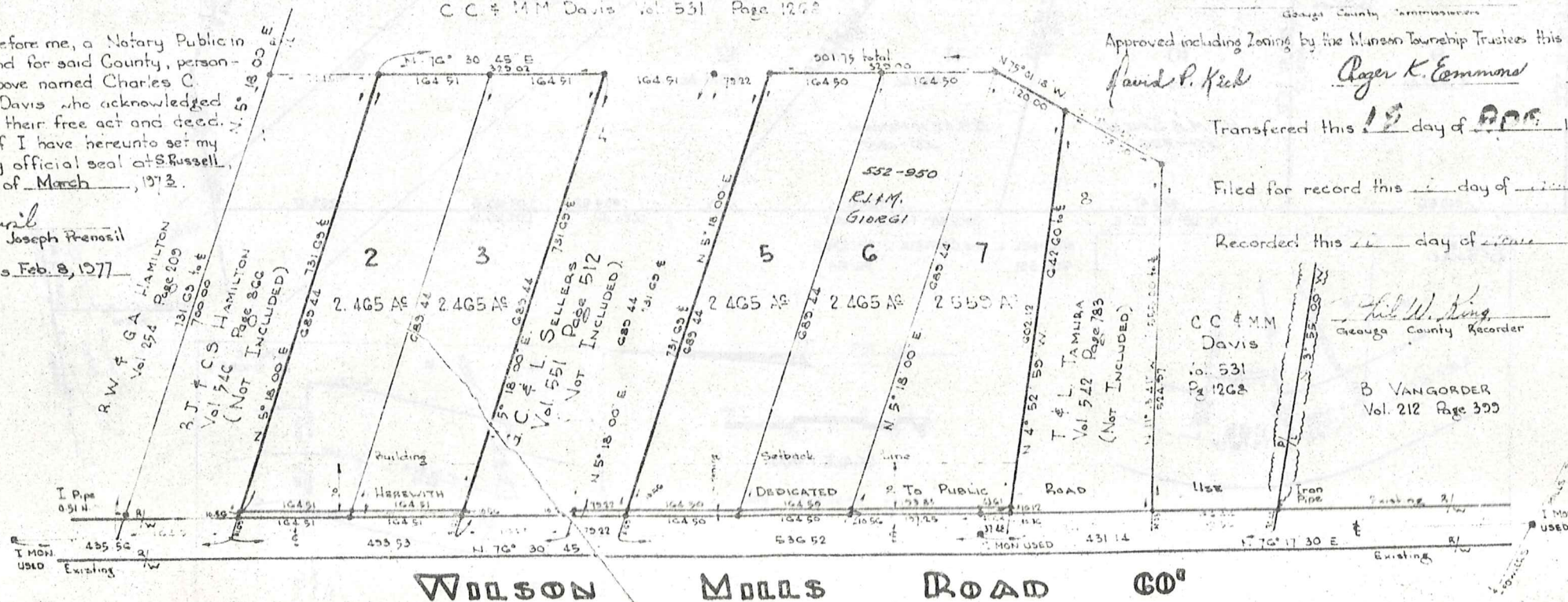
We the undersigned owners of the land shown on this Plat, Charles C. Davis and Mary M. Davis, hereby certify that this plat correctly represents our "C.C. & M.M. Davis Subdivision" a Sub-division containing Sublots 2, 3, 5, 6 and 7, and hereby accept this plat of same and dedicate to public use the area outlined in red shade, and designated as the 10' widening of Wilson Mills Road. The undersigned further agrees that any use or improvements made on this land shall be in conformity with all existing zoning, platting, health or other lawful rules and regulations for the benefit of themselves and all other subsequent owners or assigns taking title from, under or through the undersigned. The dimensions of the lots and street are shown on the plat in feet and decimal parts thereof, in witness whereof Charles C. Davis and Mary M. Davis, hereunto set their hands this 20th day of March, 1973.

Edward A. Barnosky
Witness
Joseph Prensil
Attorney

Charles C. Davis
Charles C. Davis
Mary M. Davis
Mary M. Davis

State of Ohio } ss. Before me, a Notary Public in County of Geauga and for said County, personally appeared the above named Charles C. Davis and Mary M. Davis who acknowledged that the same was their free act and deed. In testimony whereof I have hereunto set my hand and affixed my official seal at Russell, Ohio, this 20th day of March, 1973.

Joseph Prensil
Notary Public Joseph Prensil
My commission expires Feb. 9, 1977



APPROVALS

Approved Plans this _____ day of _____, 197____ Geauga County Engineer

Approved as legal form this _____ day of _____, 197____

Approved this 9th day of April, 1973 *Daniel L. Gave*
Gaugua County Board of 1

Approved this _____ day of _____, 197____

Approved and accepted by the Geauga County Commissioners this _____ day of 1973 and the 10' widening of Wilson Mills Road dedicated to public use as shown is hereby accepted as such for Geauga County, State of Ohio.

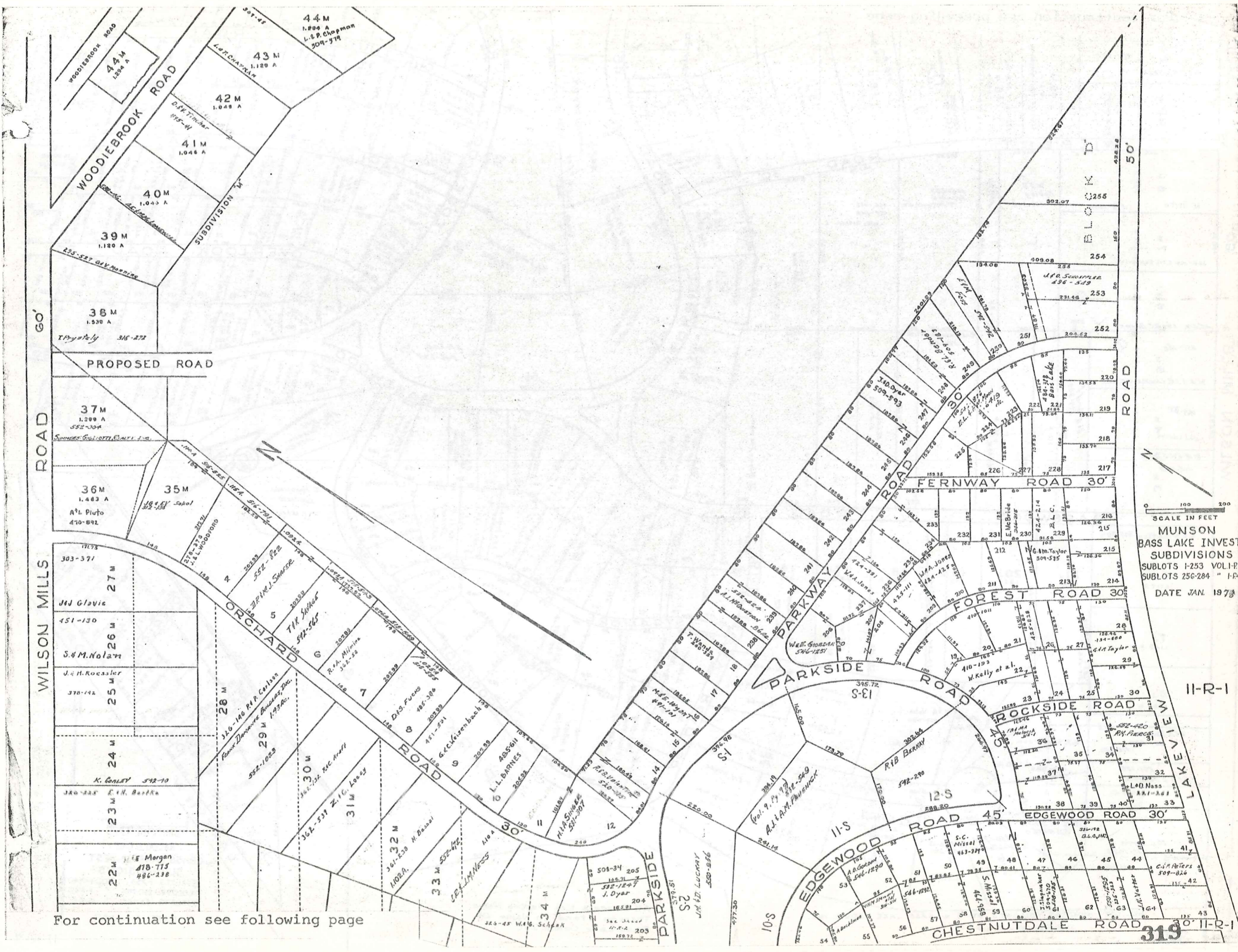
Approved including Zoning by the Munson Township Trustees this 6th day of April, 1973

David P. Keeb *Roger K. Emmons* *William H. ...*
Transferred this 18th day of April, 1973
Gaugua County Clerk

Filed for record this _____ day of _____, 197____

Recorded this _____ day of _____, 197____ in Plat B Page _____

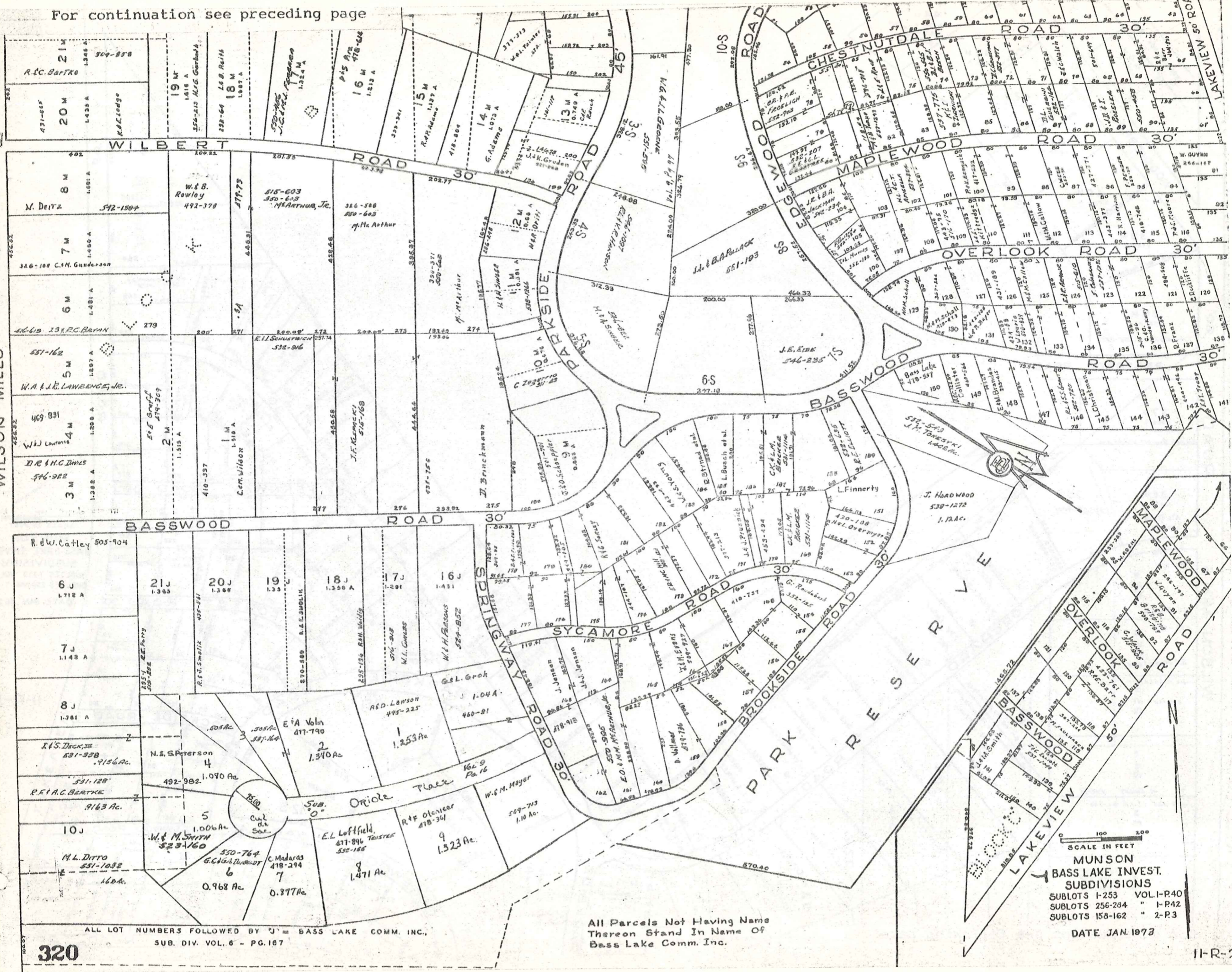
Carl W. King
Gaugua County Recorder Deputy Recorder
C.C. & M.M. Davis
Vol. 531 Page 1268
B. VANGORDER
Vol. 212 Page 399



SCALE IN FEET
 0 100 200
MUNSON
 BASS LAKE INVEST.
 SUBDIVISIONS
 SUBLOTS 1-253 VOL. 1-P40
 SUBLOTS 256-284 " 1-P42
 DATE JAN. 1973

For continuation see following page

WILSON MILLS ROAD 60'



SCALE IN FEET
0 100 200

MUNSON
BASS LAKE INVEST.
SUBDIVISIONS
 SUBLOTS 1-253 VOL-I-P40
 SUBLOTS 256-284 " 1-P42
 SUBLOTS 158-162 " 2-P3
 DATE JAN. 1973

All Parcels Not Having Name
Thereon Stand In Name Of
Bass Lake Comm. Inc.

ALL LOT NUMBERS FOLLOWED BY "J" = BASS LAKE COMM. INC.,
SUB. DIV. VOL. 6 - PG. 187

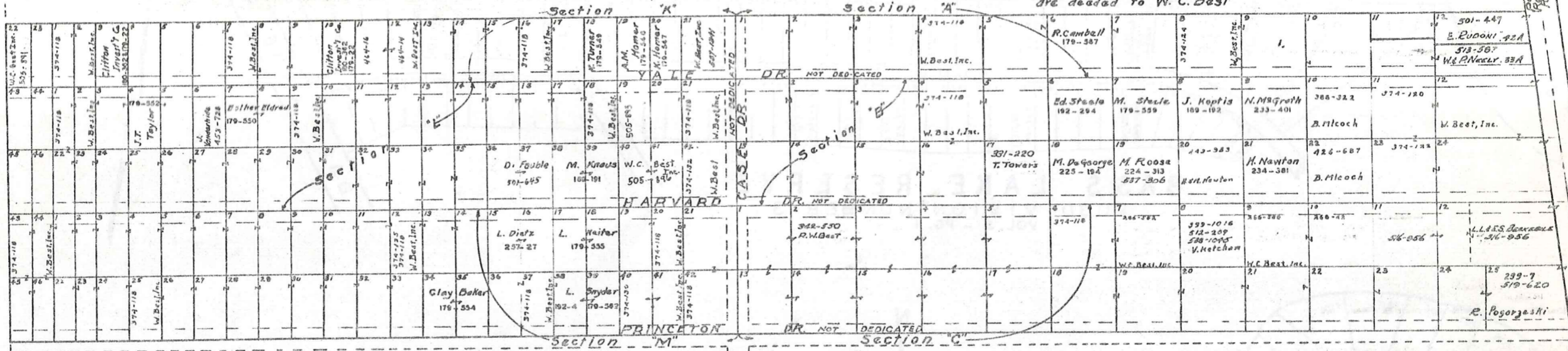
MAYFIELD

GARDENS — Subdivision No 1

Vol. 3 pgs. 15 & 16 (Plats)

Note: All lots not named are deeded to W. C. Best

Scale: 1 inch = 100 feet



WALTER C. BEST INC.

SEC. K		SEC. L		SEC. M	
LOT	VOL. & PAGE	LOT	VOL. & PAGE	LOT	VOL. & PAGE
1	232 434	1	232 434	1	232 434
2	259 488	2	232 434	2	232 434
3	332 434	3	232 434	3	232 434
4	232 434	4	232 434	4	232 434
5	232 434	5	232 434	5	232 434
6	232 434	6	232 434	6	232 434
7	232 434	7	232 434	7	232 434
8	232 434	8	232 434	8	232 434
9	232 434	9	232 434	9	232 434
10	232 434	10	232 434	10	232 434
11	232 434	11	232 434	11	232 434
12	232 434	12	232 434	12	232 434
13	232 434	13	232 434	13	232 434
14	232 434	14	232 434	14	232 434
15	232 434	15	232 434	15	232 434
16	232 434	16	232 434	16	232 434
17	232 434	17	232 434	17	232 434
18	232 434	18	232 434	18	232 434
19	232 434	19	232 434	19	232 434
20	232 434	20	232 434	20	232 434
21	232 434	21	232 434	21	232 434
22	232 434	22	232 434	22	232 434
23	232 434	23	232 434	23	232 434

WALTER C. BEST

SEC. K		SEC. L		SEC. M	
LOT	VOL. & PAGE	LOT	VOL. & PAGE	LOT	VOL. & PAGE
1	232 434	1	232 434	1	232 434
2	232 434	2	232 434	2	232 434
3	232 434	3	232 434	3	232 434
4	232 434	4	232 434	4	232 434
5	232 434	5	232 434	5	232 434
6	232 434	6	232 434	6	232 434
7	232 434	7	232 434	7	232 434
8	232 434	8	232 434	8	232 434
9	232 434	9	232 434	9	232 434
10	232 434	10	232 434	10	232 434
11	232 434	11	232 434	11	232 434
12	232 434	12	232 434	12	232 434
13	232 434	13	232 434	13	232 434
14	232 434	14	232 434	14	232 434
15	232 434	15	232 434	15	232 434
16	232 434	16	232 434	16	232 434
17	232 434	17	232 434	17	232 434
18	232 434	18	232 434	18	232 434
19	232 434	19	232 434	19	232 434
20	232 434	20	232 434	20	232 434
21	232 434	21	232 434	21	232 434
22	232 434	22	232 434	22	232 434
23	232 434	23	232 434	23	232 434

WALTER C. BEST INC.

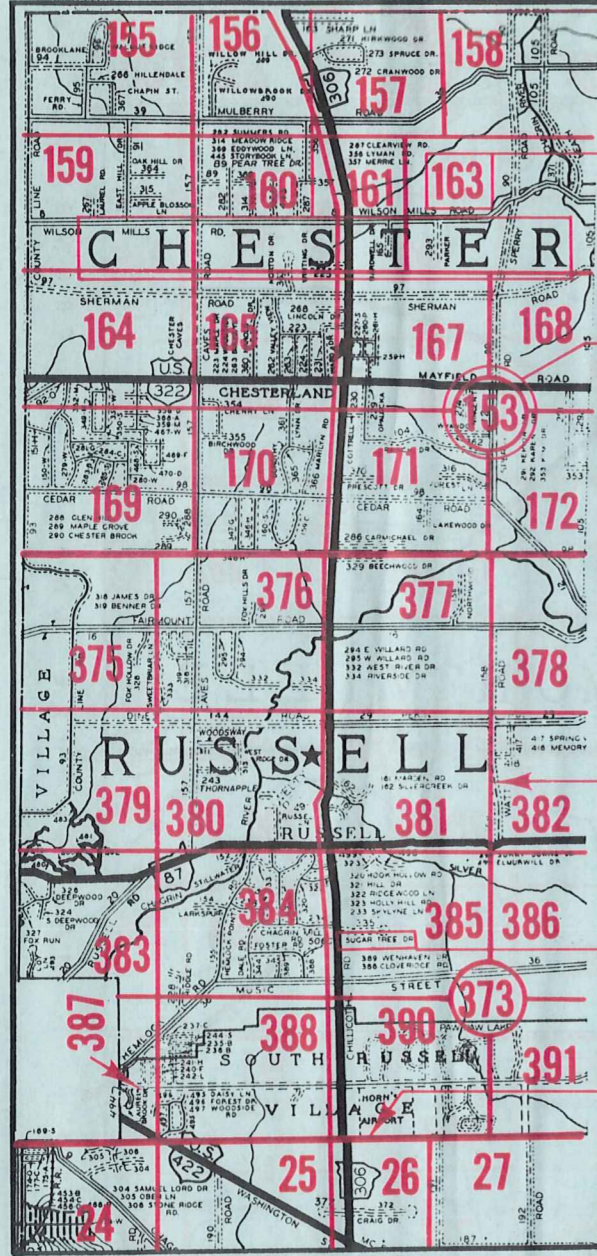
SEC. A		SEC. B		SEC. C	
LOT	VOL. & PAGE	LOT	VOL. & PAGE	LOT	VOL. & PAGE
1	232 434	1	232 434	1	232 434
2	232 434	2	232 434	2	232 434
3	232 434	3	232 434	3	232 434
4	232 434	4	232 434	4	232 434
5	232 434	5	232 434	5	232 434
6	232 434	6	232 434	6	232 434
7	232 434	7	232 434	7	232 434
8	232 434	8	232 434	8	232 434
9	232 434	9	232 434	9	232 434
10	232 434	10	232 434	10	232 434
11	232 434	11	232 434	11	232 434
12	232 434	12	232 434	12	232 434
13	232 434	13	232 434	13	232 434
14	232 434	14	232 434	14	232 434
15	232 434	15	232 434	15	232 434
16	232 434	16	232 434	16	232 434
17	232 434	17	232 434	17	232 434
18	232 434	18	232 434	18	232 434
19	232 434	19	232 434	19	232 434
20	232 434	20	232 434	20	232 434
21	232 434	21	232 434	21	232 434
22	232 434	22	232 434	22	232 434
23	232 434	23	232 434	23	232 434

WALTER C. BEST

SEC. A		SEC. B		SEC. C	
LOT	VOL. & PAGE	LOT	VOL. & PAGE	LOT	VOL. & PAGE
1	232 434	1	232 434	1	232 434
2	232 434	2	232 434	2	232 434
3	232 434	3	232 434	3	232 434
4	232 434	4	232 434	4	232 434
5	232 434	5	232 434	5	232 434
6	232 434	6	232 434	6	232 434
7	232 434	7	232 434	7	232 434
8	232 434	8	232 434	8	232 434
9	232 434	9	232 434	9	232 434
10	232 434	10	232 434	10	232 434
11	232 434	11	232 434	11	232 434
12	232 434	12	232 434	12	232 434
13	232 434	13	232 434	13	232 434
14	232 434	14	232 434	14	232 434
15	232 434	15	232 434	15	232 434
16	232 434	16	232 434	16	232 434
17	232 434	17	232 434	17	232 434
18	232 434	18	232 434	18	232 434
19	232 434	19	232 434	19	232 434
20	232 434	20	232 434	20	232 434
21	232 434	21	232 434	21	232 434
22	232 434	22	232 434	22	232 434
23	232 434	23	232 434	23	232 434

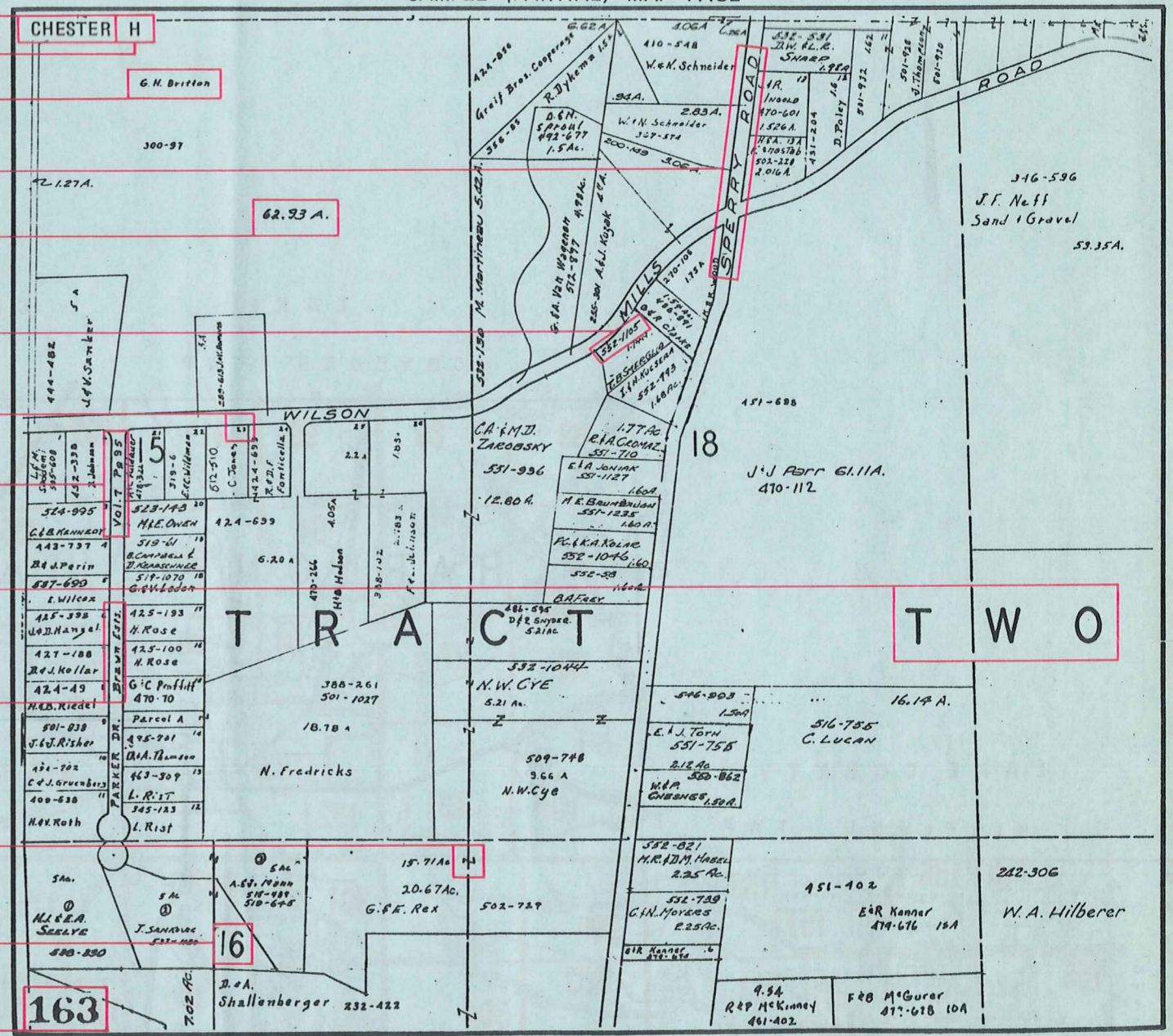
Explanation and Use Sheet for Geauga County, Ohio

SAMPLE (PARTIAL) COUNTY INDEX MAP



- Township Name
- Map Page Number (Or Letter)
- Owners Name
- Street Name
- Acreage
- Municipality Index Beginning Atlas Page Number
- Deed Book & Page
- Subdivision Lot Number
- Plat Book & Page
- Tract Number
- Atlas Page Boundary
- Subdivision Name
- Street Name
- Denotes Continuous Ownership
- Municipality Index Atlas Page Boundary
- Tract Lot Number
- Atlas Page Number

SAMPLE (PARTIAL) MAP PAGE



USE OF THE MAP VOLUME

1. LOCATE THE GENERAL AREA OF INTEREST ON THE COUNTY INDEX MAP, ATLAS PAGE 'B'.
2. A. IF PROPERTY IS IN A TOWNSHIP, NOTE THE ATLAS PAGE NUMBER. TURN TO THE PAGE INDICATED AND LOCATE SPECIFIC PARCEL OF INTEREST.
NOTE: ON SOME MAPS YOU MAY BE REFERRED TO A DETAIL SHEET SHOWING AN ENLARGEMENT OF THE AREA. THESE MAPS ARE FOUND AT THE END OF THE REGULAR MAP PAGES IN EACH TOWNSHIP EITHER IN ALPHABETICAL OR NUMERICAL SEQUENCE.
- B. IF PROPERTY IS IN A MUNICIPALITY, REFER TO THE TABLE OF CONTENTS, ATLAS PAGE 'C', AND NOTE THE BEGINNING ATLAS PAGE NUMBER FOR THE MUNICIPALITY OF INTEREST.
 - (1) TURN TO THE PAGE INDICATED. ON THIS PAGE WILL APPEAR AN INDEX MAP FOR THAT MUNICIPALITY.
 - (2) LOCATE SPECIFIC AREA OF INTEREST AND NOTE THE MAP PAGE NUMBER.
NOTE: DO NOT CONFUSE THE MAP PAGE NUMBER WITH THE ATLAS PAGE NUMBER IN THESE MUNICIPALITIES.
 - (3) FOLLOW EITHER ALPHABETICAL OR NUMERICAL SEQUENCE TO THE MAP PAGE INDICATED AND LOCATE SPECIFIC PARCEL OF INTEREST.